

# Luce lineare serie W



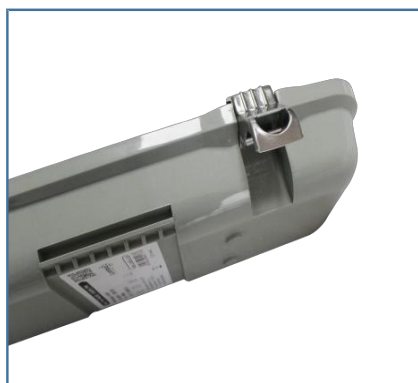
**LED LIGHTING**  
illuminate your business

## Modello wide

- . Terminali per il collegamento dei cavi
- . Layout sfalsato per chip SMD2835 su PCB per rendere la luce uniforme E senza ombreggiamenti.
- . TUV, SAA, CE Approved Driver
- . TUV Certificate Rubber Cable.
- . PC Cover + PC Housing
- . SMD2835, 26 to 28lm/led , CRI>80Ra, 2700-7000K available

**Applicazioni:** Ufficio, Ospedali, Scuole, Sale riunioni, Supermercati, etc

**130  
LM/W**



Item No.	Potenza	LED Chip	Flusso luminoso	Angolo flusso luminoso	Driver	Materiale
LLIA-LLSW-20	<b>20w</b>	2835SMD (168pcs)	2600lm	150°-160°	Lifud driver	PC+PC
LLIA-LLSW-40	<b>40w</b>	2835SMD (336pcs)	5200lm	150°-160°		
LLIA-LLSW-60	<b>60w</b>	2835SMD (432pcs)	7800lm	150°-160°		

CCT: 3000K/4000K/6000K